

RESILIENCE AND DEPENDENCY CONCEPTS FOR SUPPLY CHAINS



TOM WALL, PH.D.

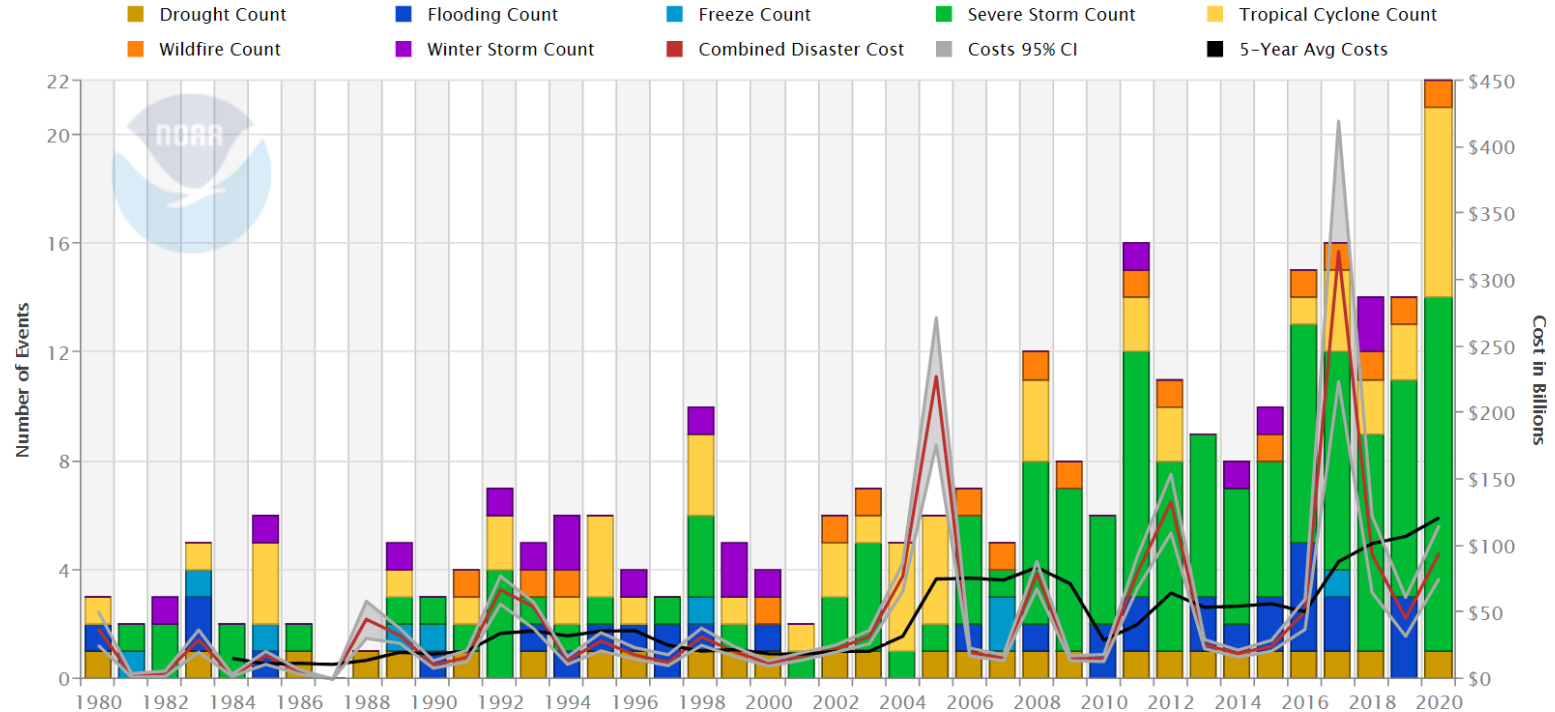
Decision and Infrastructure Sciences Division
Argonne National Laboratory

RILA Energy Resiliency in the Supply
Chain Webinar: Transportation +
Sustainability Series

July 28, 2021

2020 BILLION-DOLLAR CLIMATE DISASTERS

United States Billion-Dollar Disaster Events 1980-2020 (CPI-Adjusted)



Powered by ZingChart



RESILIENCE

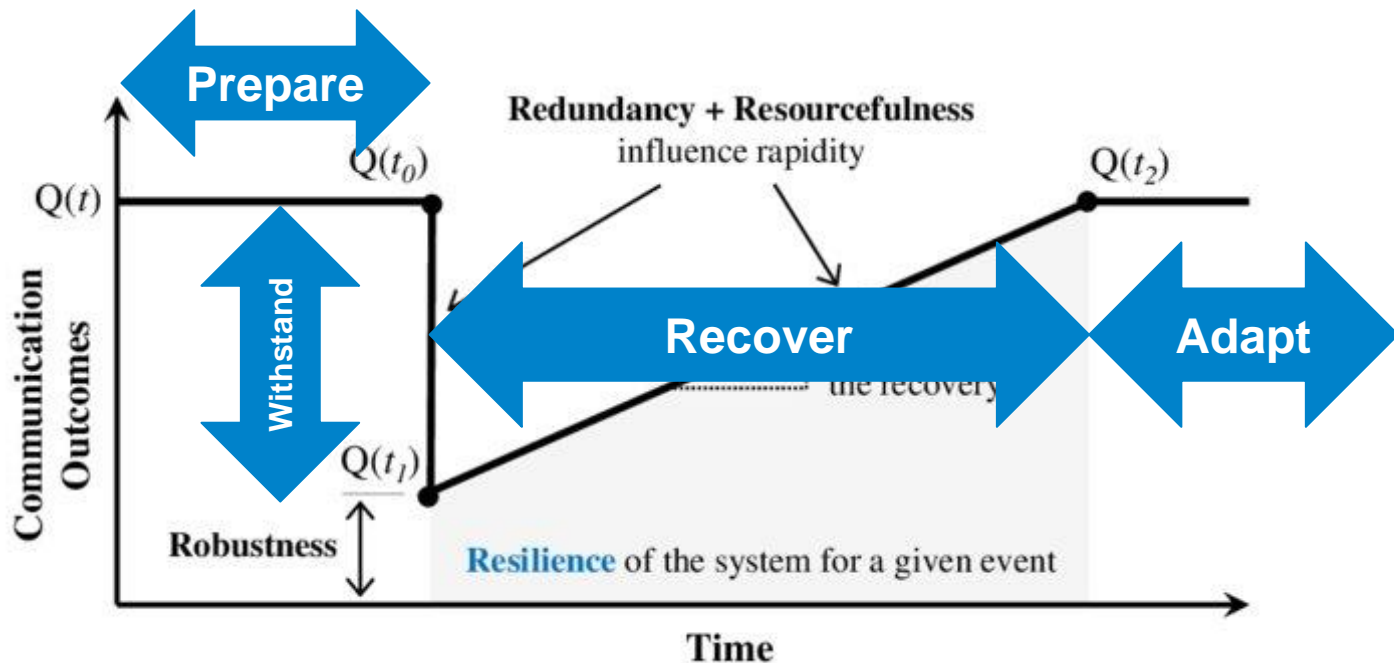
The ability to **prepare** for and **adapt** to changing conditions and **withstand** and **recover** rapidly from disruptions.

CONCEPTUALIZING DISASTER RESILIENCE

Resilience Triangles / Curves

Resilience Elements

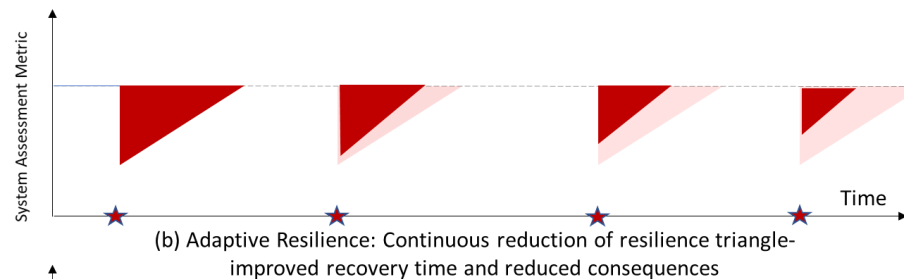
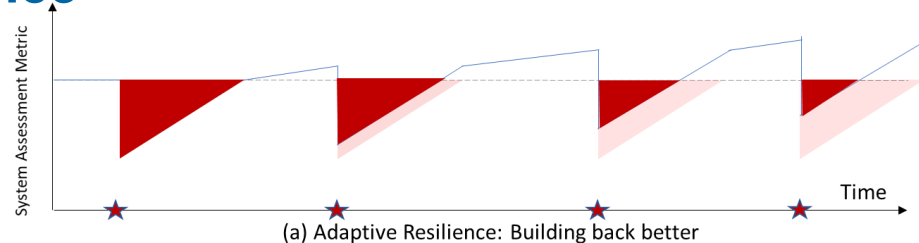
1. Prepare
2. Adapt
3. Withstand
4. Recover



CONCEPTUALIZING DISASTER RESILIENCE

Adaptive Resilience

- **Build Back Better**
- **Improve Response & Recovery**
- **Improve Robustness to Disruption**



Legend



Disruptive event occurrence

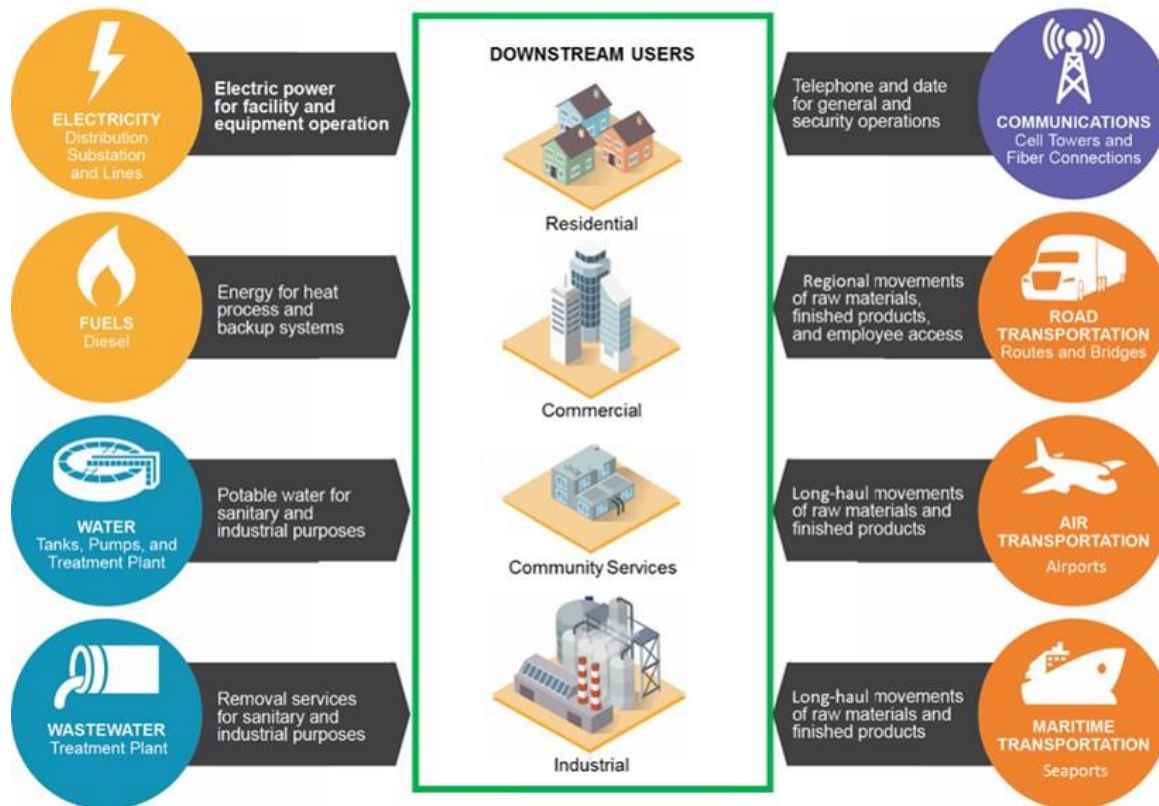


Resilience loss for each future event



Baseline resilience loss (without any AR strategy in place)

INFRASTRUCTURE DEPENDENCIES

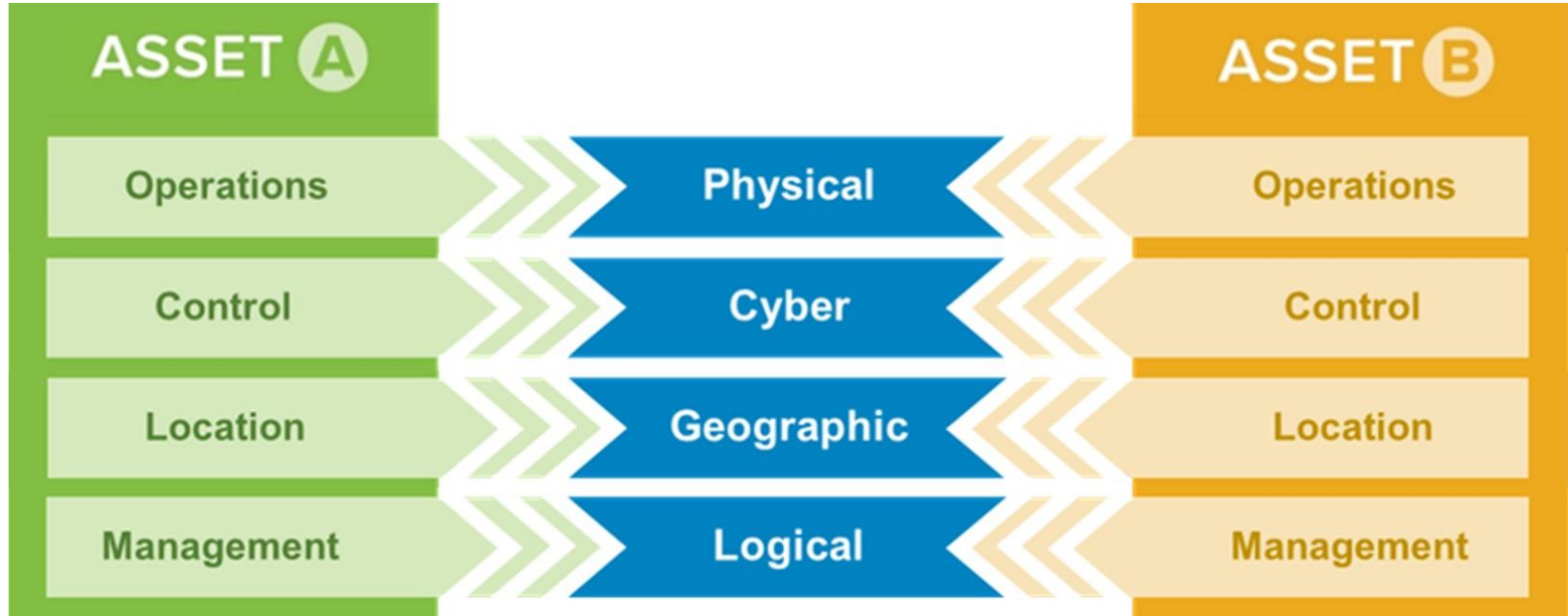


U.S. DEPARTMENT OF
ENERGY

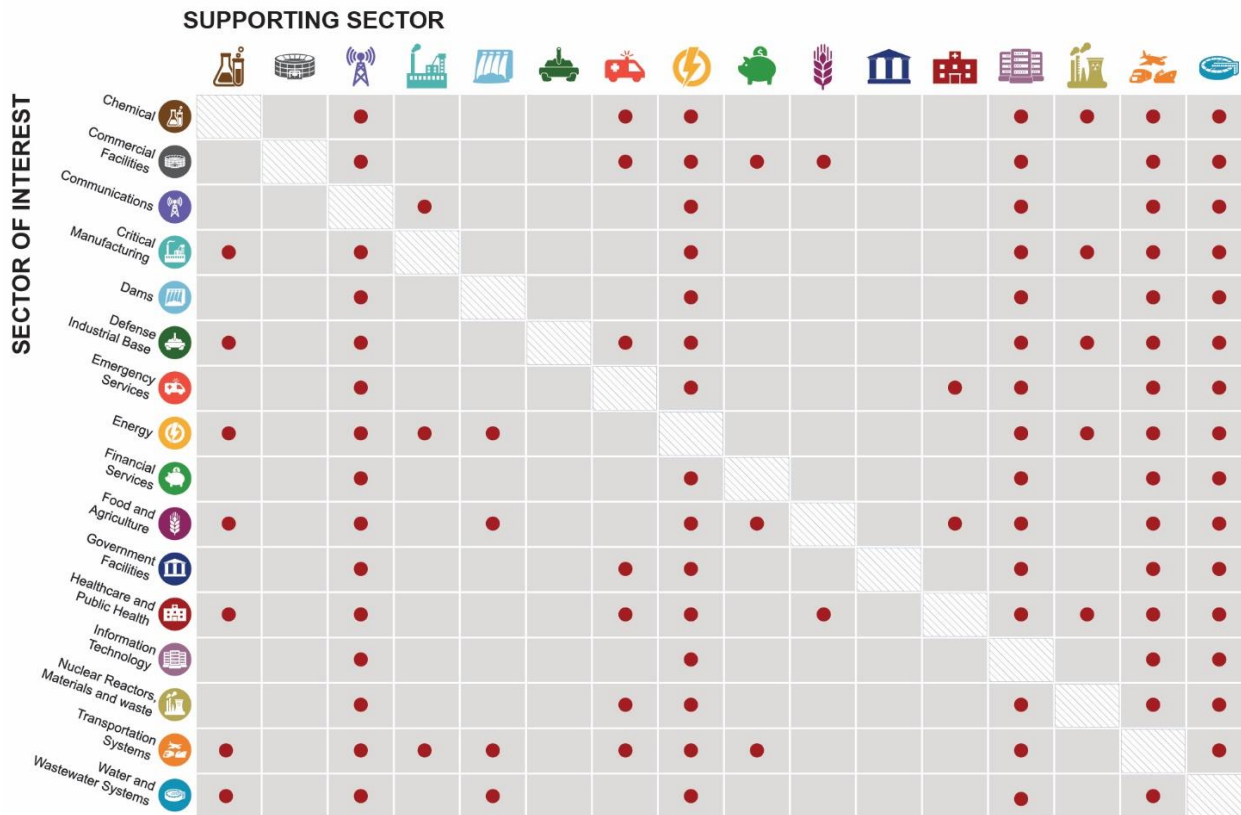
Argonne National Laboratory is a
U.S. Department of Energy laboratory
managed by UChicago Argonne, LLC.

Argonne
NATIONAL LABORATORY

INFRASTRUCTURE DEPENDENCIES



INFRASTRUCTURE DEPENDENCIES



THANK YOU

twall@anl.gov

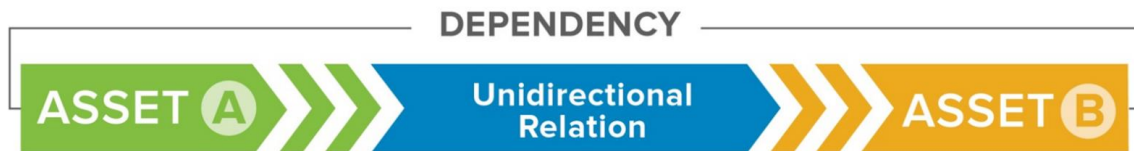


Argonne National Laboratory is a
U.S. Department of Energy laboratory
managed by UChicago Argonne, LLC.



INFRASTRUCTURE DEPENDENCIES

Dependency – “linkage or connection between two infrastructures, by which the state of one infrastructure influences or is reliant upon the state of the other” (Rinaldi, Peerenboom, and Kelly, 2001)



(Petit et al., 2015)

Interdependency – combination of two or more dependencies between infrastructures in which the state of each infrastructure influences or is reliant upon the state of the other



(Petit et al., 2015)